

## Welcome

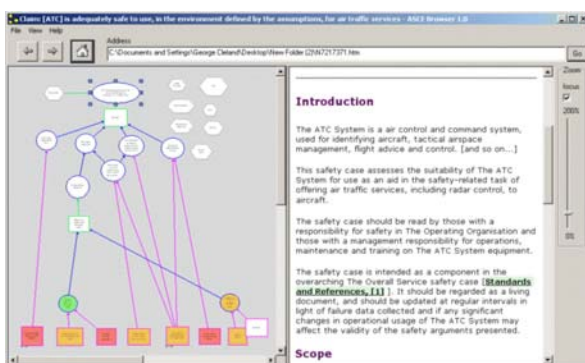
Welcome to the second issue of what we hope will be a useful publication for ASCE users and potential users. We have produced this issue all by ourselves, but we hope that in future we can canvas input from you, the users. Do please mail us your views.

*For contact points and web addresses see page 4.*

## Reporting

Over the past few months we have been enhancing ASCE's ability to create MS Word or PDF reports in corporate templates. The new One-click export plugin can now deliver a report into Word templates directly without the users having to intervene. One-click export will also calculate tables of contents, manage references and citations, and automatically number paragraphs and headers. One-click is downloadable from the customer download area. We can also customise your templates for optimised performance within Word. Contact George for more details.

The simplest way to share your ASCE networks with non-ASCE users is to use the HTML export function to export your network into an empty folder. This can then be shared on an intranet, or emailed to others for viewing with a standard web browser.



*The ASCE Browser*

An alternative, more powerful way to view these exports is to use the ASCE Browser. This is a small utility that can be freely distributed to allow anyone to view and navigate their way through an ASCE network.

The ASCE Browser can be copied onto a CD, along with your ASCE network, and then configured to "autostart" the safety case as soon as the recipient inserts the disk into their computer's CD drive.

It is intuitive and simple in use, and even users with no experience of ASCE can be happily browsing complex structures in a couple of minutes. The graphical argument is fully zoomable, while tooltips reveal the full node title, even when zoomed out.

## ASCE futures

### ASCE version 4

We are working hard on version 4 of ASCE. We have just completed a first set of requirements and will be passing these out as a consultation document to key users. If you would like to see a copy of this document and have the chance to influence the direction of ASCE version 4 contact Chris Nicholls (cjfn@adelard.com). We expect version 4 of ASCE to ship around the end of 2008.

### DOORS and FaultTree+ integration

Following the successful development for QinetiQ of a bespoke integration with the Telelogic DOORS Requirements Management System, we are developing a generic interface to DOORS and the Isograph's FaultTree+.

We have a beta version of the DOORS plugin. Contact Luke Emmet (loe@adelard.com) if you would like a trial copy. We are currently conducting a requirements and market analysis project for the Fault Tree+ interface.

### ASCE 3.5 approved on DII(F)

After scrutiny by the Atlas consortium, ASCE 3.5 has received approval for deployment on the MoD's future information system DII(F). This means that following the DII(F) roll-out to MoD users last summer no further technical approval will be required for installing ASCE on networked systems. During assessment ASCE accrued only 19 penalty points of a maximum of

---

120, an impressively low score for what the Atlas Consortium classes as “complex” application.

### ASCE 3.5.30 maintenance release

Since we launched version 3.5 of ASCE we have not sat on our laurels. A maintenance release has recently been issued. Version 3.5.30 is the currently supported version and all users are encouraged to upgrade. 3.5.30 is stable and we expect this to be the last release before version 4 later this year. This version fixes a few bugs and issues.

For full details, and to download the 3.5.30 patch visit our website (*see page 4*).

### Customer download area

Ever since version 3 of ASCE we have been adding functionality to ASCE via plugins. Many of these are already freely available from our website. In future most plugins will be available for download only to customers on a support contract, who will be given access to a password-protected area. Contact Anne Taylor for login details.

*Read more about plugins on page 4.*

### Schema updates

The version 1.2 schemas for both Goal Structuring Notation and Claims-Argument-Evidence introduced the idea of “traffic lights”. By setting the Confidence status field to low, medium or high, the node is shaded red, amber or green. This has proved such an effective means of communication that we have extended the concept in version 1.3 schemas to support two further status fields, Spectrum 1 and Spectrum 2. Each provides a choice of ten colours which are used for decorating regions of a selected node. Other schemas, including Bow-Tie, and Goals, Questions, Metrics are available from the ASCE download site.

### Cassandra Plugin

We are pleased to announce the availability of an updated Cassandra plugin. This supports more powerful interrogation of the tables in a Cassandra Hazard Log. As well as being able to provide tables and individual summaries of the key Cassandra objects (accidents, hazards, controls, causes and references), it extends the capability of Cassandra by creating a summary risk matrix. The updated plugin is available

from the website’s customer download area. The plugin requires Cassandra 3.2 or later.

### Events

Adelard attend key events around the world.

#### Recent events


- International System Safety Conference, Baltimore, August 2007

We presented a paper on provenance and traceability in safety cases in the UK theme and we presented a full day tutorial on construction and maintenance of safety cases using ASCE.

 [www.system-safety.org/~am\\_2007](http://www.system-safety.org/~am_2007)


- MoD Equipment Safety Assurance Symposium, Bristol, Nov 2007

Again we had a stand for this conference, and presented a half day tutorial on ASCE-based safety case development.

 [www.dnv.co.uk/itgs/ESAS07](http://www.dnv.co.uk/itgs/ESAS07)

- INCOSE Requirements Meeting Bristol, May 2007

This meeting compared three requirements elicitation methods through workshops. ASCE was used by Colin Brain of SE Validation to support a session using Michael Jackson’s Problem Frames approach. The Problem Frame Schema can be downloaded from SE Validation’s website:

 [www.sevalidation.com/tools.shtml](http://www.sevalidation.com/tools.shtml)

#### Upcoming events

Do come and visit us at the following:


- IET System Safety Conference, Birmingham, 20-22 Oct 2008

We will have a stand fully manned over the period of the conference.

 <http://conferences.theiet.org/safety/>

- Safety Critical System Club, London, 5 June 2008

This is the launch event for the SCSC Tools Directory. ASCE will be exhibited at this event and there will be user presentation on ASCE.

 [www.safety-club.org.uk/diary.html](http://www.safety-club.org.uk/diary.html)

### Project news

We often can’t talk about what our customers are using ASCE for. We are therefore delighted to be able to mention some key projects that were recently announced.

Rail projects are increasingly adopting ASCE for their safety cases. Thales Rail Signalling

Solutions will be using ASCE-based GSN for the system safety cases for the Jubilee, Northern and Picadilly Line signalling projects where a TBTC moving block is being applied.

A new project is underway in collaboration with the MoD Defence Ordnance Safety Board. This will develop safety case and safety case report structures, as well as supporting guidance on how to comply with the MoD safety standard 00-56, the supporting Project Oriented Safety Management System (POSMS), and the ordnance specify safety standard JSP520. Results of this work will be publicly available later this year.

ASCE is being used on the REVVA project to develop verification, validation and accreditation cases for defence simulations. REVVA is an international project involving the UK, France, Netherlands, Germany, the USA, Canada and Sweden. Adelar's partner SE Validation is providing specific project support to the consortium.

## Domain-specific content

We have been working hard at developing domain-specific support material for ASCE users. We have found these custom templates help ward off the "blank page syndrome" which is often experienced when starting a new project. We will soon be making this material available from our website; in the mean time, if you would like a copy, please contact Anne Taylor.

The templates so far include:

### ■ ITOP-1-1

This is the standard used for defence simulation VV&A cases (see REVVA project news above).

### ■ DefStan 00-56 and POSMS

DefStan 00-56 is the UK MoD standard for safety-related system procurement. POSMS (Project Oriented Safety Management System) provides supporting process guidance. We have developed a template for compliant safety case reports which includes guidance on how to build your case.

### ■ JSP 520

JSP 520 is the safety management system for ordnance, munitions and explosives in the UK defence sector. We have developed a template for JSP-compliant safety case reports. The currently available version reflects version 1 of JSP

520. Version 2 templates will be available later this year (see Project news, above).

### ■ Yellow Book

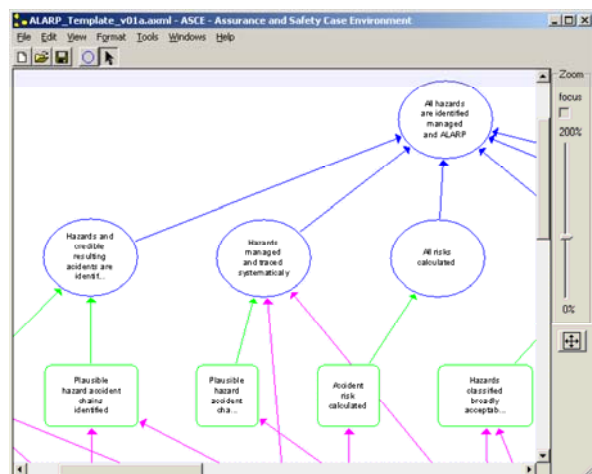
The Yellow Book is the safety management system for the UK rail sector. We have developed a safety case report template for version 3 of the Yellow Book. Yellow Book 4 was made available in Sept 2007. The templates will be updated to reflect this, and we will also supply GSN structures encoding the examples in the linked Application Note on the use of GSN in Rail Safety Cases.

### ■ ALARP template

This is a partly completed Claims-Arguments-Evidence structure which encodes the process for demonstrating ALARP compliance.

### ■ GSN patterns

We have encoded a number of GSN patterns, mainly taken from various York University theses. These are available as ASCE files, HTML exports and Word files.



The ALARP template

### ■ Eurocontrol GSN examples

Eurocontrol publish a Safety Case Development Manual using a specialised version of GSN, available at:

<http://tinyurl.com/29j2x6>

We have developed a schema representing this particular version of GSN, as well as one of the example safety cases from the manual.

## Plugins update

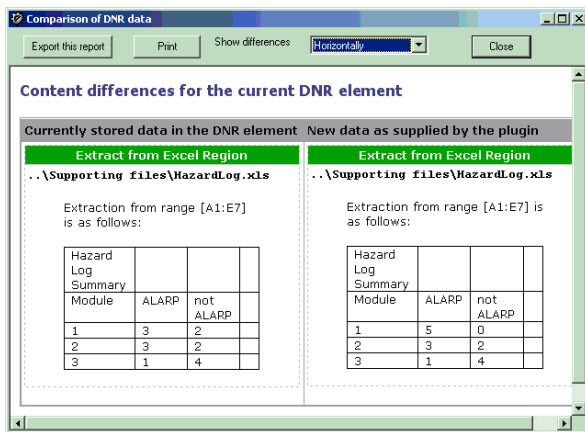
Plugins are a key enabler for delivering added value and customisation in ASCE. These are written as small VBScript programmes (similar

to Word and Excel's macro language) bolted on to ASCE to provide extra functionality. We can develop plugins for you, or you can write them yourself. Developer documentation is available on the public download site.

The base system comes with plugins for importing information from Excel, Access, other ASCE networks, and the HARMS and Cassandra products. Additional plugins are available for Word and PDF, as well as an enhanced Cassandra plugin.

Mapping plugins not only provide the ability to import information into ASCE, but also allow you to detect and track changes in the mapped information.

Other plugins bundled with the core product include layout and node numbering tools. These are effective for managing the neat layout and node sequencing of large ASCE networks.



The result of a validation of an Excel map, showing the user which parts of a mapped Excel file have changed since the initial import

Tony Corkery from QinetiQ has written a plugin which uses the traffic lights system (see *Schema updates, page 2*) to indicate the completion status of a GSN argument. This is available on the public download area.

A plugin which supports text find and replace across a network is also available, but only for supported customers.

## ASCE courses

We are running two series of ASCE Foundation and Advanced courses at our London offices: the first on the 29th April and 1st May respectively, the second, later in the year, on the 16th and 17th September.

Full details are available at :

[www.adelard.com/events](http://www.adelard.com/events)

These courses can also be delivered on customer premises; contact Anne Taylor for more information.

## ASCE User Forum

On April 30th, on the day between the above courses, we will be holding an ASCE User Forum near our London office. Attendance is free, but you need to register. Again, contact Anne Taylor for more information.

## ASCE team spotlight

In each issue of ASCE News we will be introducing you to members of the ASCE team.

### Kostas Tourlas

Kostas is one of the team's behind-the-scenes members. For the past few years he has led Adelard's product assurance activities on ASCE. This involves development of test strategies and plans, production of test harnesses, code reviews, etc. Kostas is the person to



- thank, because ASCE performs faultlessly in all your work
- curse, because he missed that one little bug at the centre of your use of ASCE.

Kostas holds degrees in Informatics and Computer Science: a BSc from Athens, and an MSc and PhD from Edinburgh, where he wrote a thesis thrillingly entitled *Diagrammatic Representations in Domain-Specific Languages*.

When he isn't working on ASCE, Kostas splits his time between Adelard's Independent Safety Assessment team, and our research work for the nuclear sector. In the little spare time we allow him out of work you'll probably find him up a mountain.

### Contact us

General support: [asce\\_support@adelard.com](mailto:asce_support@adelard.com)

Anne Taylor: [afnt@adelard.com](mailto:afnt@adelard.com)  
+44 20 7490 9450

George Cleland: [glc@adelard.com](mailto:glc@adelard.com)  
+44 131 336 5217

ASCE downloads (general):

[www.adelard.com/asce](http://www.adelard.com/asce)

ASCE downloads (supported customers):

[www.adelard.com/asce/support/customers](http://www.adelard.com/asce/support/customers)